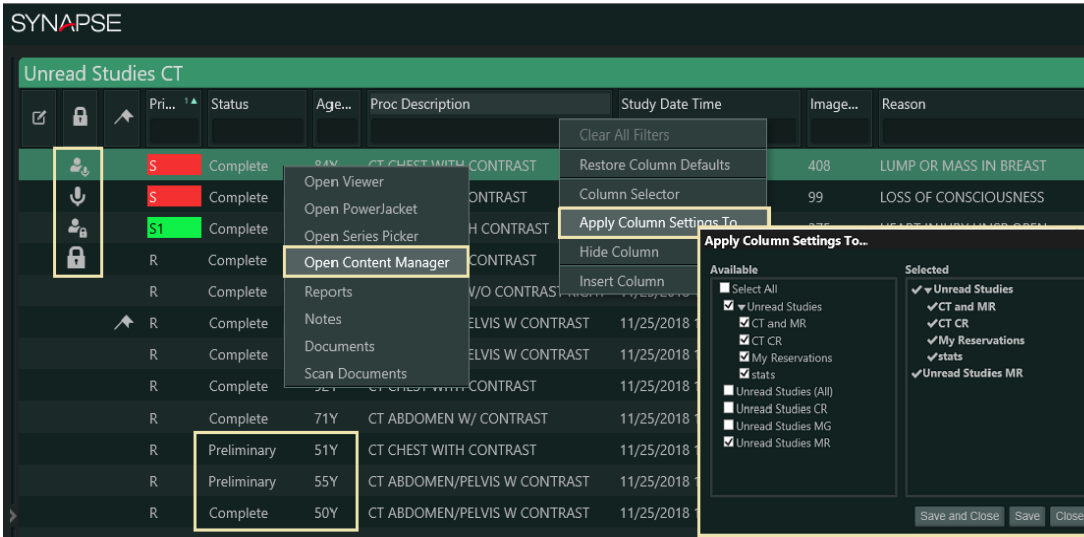






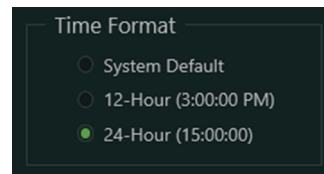
What's New in Synapse PACS Version 7.2?

Designed with direct feedback from Fujifilm radiology and cardiology (CV) PACS customers, Synapse® PACS version 7.2 includes more than 80 exciting features and enhancements that combine radiology and cardiology PACS functionalities on a single platform. The purpose of this document is to highlight some of the combined features, functionalities, and workflow benefits of Synapse PACS version 7.2.

Worklist Enhancements



- Transfer worklist customizations to other worklists.
- Nuance PowerScribe workflow additions:
 - Preliminary status support
 - Preliminary status displays in unread worklists
 - Linked unread exams marked dictated in Synapse
- Select a study from worklist, then change to Series view to bring study to top of worklist.
- New worklist study lock icons:
 -  My Active Dictation
 -  Others Active Dictation
 -  My Study Lock
 -  Others Study Lock
- Unlock a study from the worklist.
- Restrict viewing of unread study counts by roles or everyone.
- Worklist "Time Warp" returns to last opened study.
- New worklist Patient Age columns:
 - Patient Current Age
 - Patient Age at Study



- Display time in 12- or 24-hour format.
- Content Manager updates:
 - Open Content Manager from any worklist (privilege-based).
 - Create new study without an accession number.
 - Log change events to Study and Patient fields.
 - Highlight two studies on the worklist to open both in dual panes.
 - Display annotations within image pane.
 - Display tomosynthesis images.
 - Additional locations:
 - Primary
 - Pending
 - Prior Temporary
 - Current
 - Prior

Collection Folder Support

- Add studies from My History and Multiple Datasources (MDS), including Synapse VNA, to collection folders.

Viewer and PowerJacket Enhancements



- Series Picker toolbar and Anywhere Series Picker:
 - Movable Series Picker toolbar
 - Auto-hide Series Picker toolbar
 - Pop-Out Series Picker toolbar study grid
 - Add, hide, and move Studylist columns using Column context menu.
 - Split current and prior Series Picker toolbar and Anywhere Series Picker into two scrollable areas.
 - Hide series descriptions under thumbnails; configurable per modality.
 - Synchronized Series Picker toolbar and Anywhere Series Picker Studylists
- Enhanced Anywhere Series Picker:
 - Collapsible Studylist Grid above series thumbnails
 - Rearrange series thumbnails.
- Loop/not loop reading protocol steps



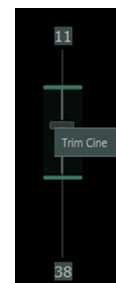
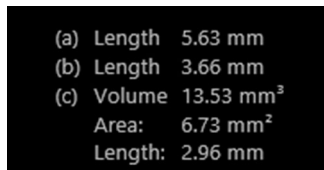
- Image Viewed notifications:
 - Haven't viewed All Images pop-up box; configurable per modality
 - Checkmark when all images are viewed in a series; configurable per modality
- PowerJacket improvements:
 - Configure PowerJacket font sizes for study grid, reports, notes, and study info tab.
 - PowerJacket Study Info tab displays physicians' phone numbers.
- Move MRI Localizers and Dose Reports to the end of the Series Picker:
 - Combined CT/MR user setting displays localizers first or last.
 - Secondary capture dose reports automatically display last.
- Series reorder from Anywhere Series Picker in viewer
- Independent Synapse Search Window available via new icon on the viewer toolbar.
- Legacy Synapse search icon has returned to the default worklist.
- Display reference lines during dynamic scrolling and cine.
- Sort/filter DICOM transfer destinations.
- Delete images (with privilege) from:
 - Worklist Anywhere Series Picker
 - PowerJacket Anywhere Series Picker
 - Viewer Anywhere Series Picker
 - Viewer Series Picker toolbar
- New shortcut keys:
 - Save Study Annotations (V)
 - Next Series Sets (CTRL+Right Arrow) and Previous Series Sets (CTRL+Left Arrow) to cycle through the next group of series, independently of the other displayed study

Mammography

- Loop or not loop reading protocol steps
- Enhanced overlays for number of priors and number of images
- Optional pop-up box at end of reading protocol step if all images not viewed
- Optional checkmarks on series thumbnails when all images are viewed
- Improved synchronized scrolling of stacked priors
- Display Hologic MALC (Mass and Calcification) CAD markers.

Enhanced Cardiac Functionality for Ultrasounds, Cine, and XA Studies

- New cardiac annotation tools:
 - Velocity
 - Time
 - Volume
 - VTI
 - Area
 - Slope
- Ultrasound ruler and CV measurements are labeled on the image and at the bottom corner of the viewport.
- New US/XA series order option to split single frame images into separate series
- Apply average digital subtraction to XA images with specific DICOM tags.
- US/XA multiframe cine improvements:
 - Cine multiple series at the same time.



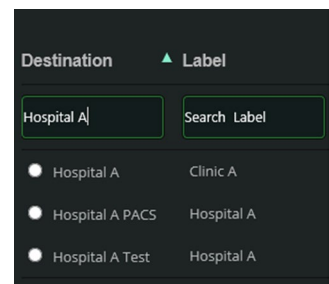
- Cine loop or oscillate user setting.
 - Activate tools and image manipulation during cine.
 - Trim cine loops via right click on scroll bar.
 - Export clipped image set.
 - Delay Autoplay until hybrid caching is complete.
 - Configure default non-multiframe cine frame rates for all modalities.
 - Configure single image display time during cine of the “All Images” series.
- Protocol panel enhancements (CV): Improved placement/navigation and measurement workflows

Improved Reading Protocol Support

- “Missing series” message in viewport for series-based reading protocols
- New reading protocol cards for more “and/or” viewport customizations
 - Drag/Drop control to add alternative series (cards) on the fly
 - Up to six alternative cards per viewport
- Series Does Not Contain rule
- Option for current user to disable system reading protocols for their profile
- User setting to loop or stop at end of protocol steps
- Make dynamic reading protocol layout higher priority over system default protocols
- Honor Don't Fill Empty Viewports user settings.

Administration

- Display time in 12- or 24-hour format at enterprise/role/user level.
- Restrict patient level access by user or role.
- Restrict Synapse Chat access by role.
- Restrict viewing of unread study counts by role or everyone.
- Delete series from Anywhere Series Pickers (new privilege-based).
- Assign labels to DICOM transfer destinations for grouping and sorting.
- DICOM destinations display in alphabetical order.
- New user settings:
 - Save changes if automatically logged off.
 - Skip studies in Preliminary Status during automatic workflow.
 - Split XA/US single-frame images into separate thumbnails.
 - CT/MR localizer series first or last
 - Cine single and multiframe settings
 - Loop reading protocol steps
 - Make dynamic reading protocols higher priority per modality.
 - New Reporting Tab (used only with Synapse CV)
- Save Changes user setting moved to the General tab.
- Anonymize Text Overlay tool moved to Tools in the right-click tool menu.
- Separated privileges:
 - Export Images → DICOM Transfer, Export to File
 - Merge → Merge Patient, Merge Study
 - Reallocate → Reallocate Study, Reallocate Series, Reallocate Image
 - Manage AdHoc Deletion → Delete Patient, Delete Study, Delete Series, Delete Image



- New privileges:
 - Workstation Series Deletion
 - Add/Edit Patient
 - Add/Edit Study
- User setting to choose which viewer to close

Architectural and Security Improvements

- Microsoft Server 2019 support
- Synapse Compute
 - Oracle 19c support
 - Transparent Data Encryption (TDE) support
- Manage user access to worklists and patients (GDPR support).
- Synapse browsers:
 - Google Chrome
 - Microsoft Edge
 - Browser Extension plugin
 - Hybrid support for Google Chrome and Microsoft Edge
- AES 256 encryption support: secure URL decryption

